



## SURVAIG®



Predictive remote condition monitoring system for turnouts  
PRIME Product Line

# SURVAIG®

## A predictive monitoring system to improve your maintenance performance

Based on their experience of remote monitoring, Vossloh Cogifer and its subsidiary SIEMA applications offer complete predictive maintenance of turnouts, by providing information or by triggering warnings before incidents. SURVAIG® significantly reduces operating costs related to turnouts, through prediction of failures and degradation that might interrupt traffic.

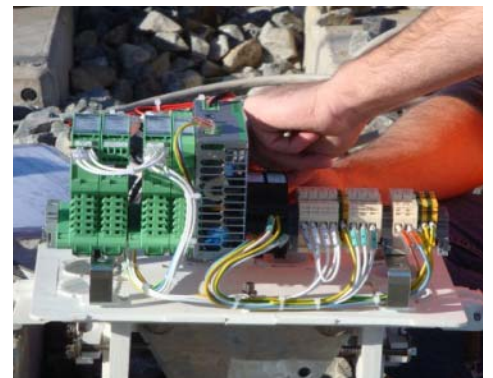
### Why Predictive remote monitoring ?

The remote monitoring of systems improves train regularity on busy lines:

- ▶ Reduction of the failure reporting time,
- ▶ Reduction of the routing time through remote consultation of failure types and their principal causes,
- ▶ Reduction of work times through facilitated understanding and immediate identification of the action to be taken and the localization.

Predictive remote monitoring allows to improve :

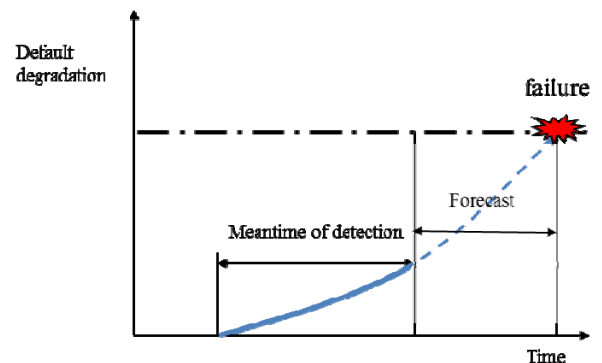
- ▶ Reliability
- ▶ Availability
- ▶ Maintainability
- ▶ Safety
- ▶ Maintenance Cost



### Why SURVAIG® ?

SURVAIG® provides information and issues warnings before incidents occur. It continuously detects and quantifies the degradation of the performance of partially or fully instrumented turnouts.

SURVAIG® acquires a wide range of measurements in real time, processes them locally, then stores them on a remote station. It carries out immediate or off-line analyses to identify required maintenance actions, predict failures and schedule maintenance or repair work.



### A modular system

Elements can be added or removed according to needs, optimizing implementation costs.

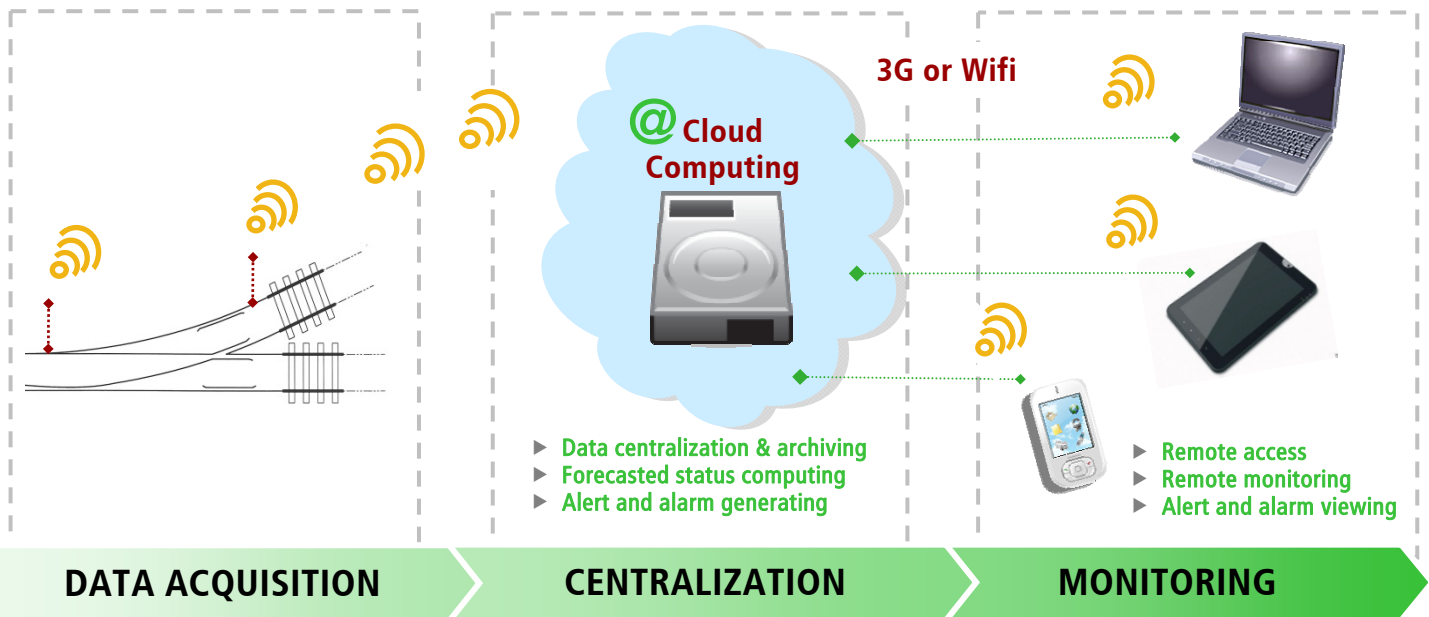
Example of used sensors according to the customer need

Active power consumption	Actuation & locking force	Equipment detection	Switch blade / stock rail position	Vibration	New need



YOUR CUSTOMIZED SOLUTION

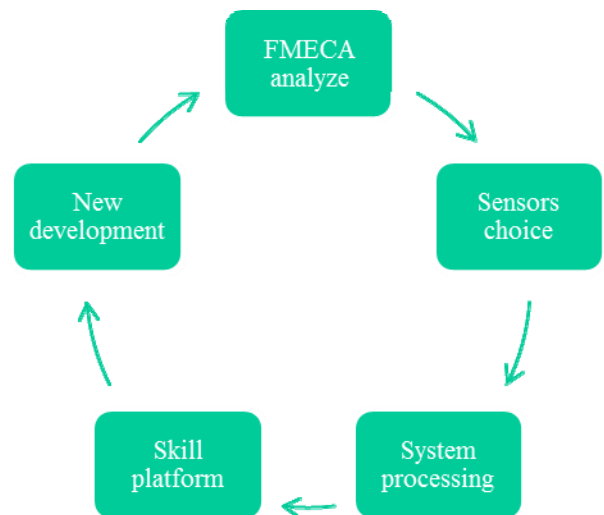




## Why Vossloh Cogifer Services ?

Vossloh Cogifer offers a turnkey system by helping customers from the preliminary study, the installation until the commissioning and even after it :

- ▶ Failure Mode Effect Criticality Analysis
- ▶ Help to choose which kind of sensors should be use
- ▶ Operational assistance of the customer
- ▶ Statistic Kernel for Intelligent Learning Language
- ▶ New development based on return of experience and skill platform data



Vossloh Cogifer and SIEMA applications experts are ready to help all railway and urban networks to examine any technical and economic solution for their maintenance performance.



**For further information,  
please contact :**

SIEMA applications  
is a subsidiary  
of Vossloh Cogifer,  
world leader  
in points and crossings.



### **SIEMA applications**

35, rue Alfred Brinon  
69100 VILLEURBANNE - FRANCE

Tel : +33 (0)4 78 85 14 14

Fax : +33 (0)4 78 68 98 44

contact-siema@vossloh-cogifer.com